

With more than 30 years of experience, HOHNER AUTOMÁTICOS, the sole spanish optical encoders manufacturer, from its headquarter based in Breda (Girona province), designs, manufactures, commercialize and supports its customers in the development of industrial automation projects. Our own departments of optical, mechanical and electronic manufacturing allow us to offer to our customers free engineering services with maximum efficacy and fast delivery time. It is our flexibility and adaptability, coupled with our ethos of engineering, manufacturing excellence and quality concern, which has placed HOHNER AUTOMÁTICOS at the forefront of the best encoders manufacturers in the world.



Incremental Encoder

Shaft

We have a vast range of shaft encoders, from miniature encoders of 24 mm diameter till Heavy duty models of 90 mm.



Encoder Incremental

Hollow Shaft

We have a large product range of hollow shaft incremental encoders, from 4 to 42 mm and also many accessories for the correct adjustment of the encoder on the machine.



Absolute Encoders

Hollow Shaft

Hohner Automaticos has a complete range of absolute encoders, singleturn and multiturn, with different interfaces and different communication protocols. The flexibility of our products is allowing us to offer to our customers tailor made mechanical executions, and programmable encoders to adjust them to every application.

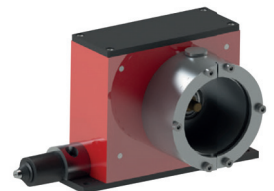


Linear Measurement

Draw Wire (ENCO-METER)

ENCO-METER systems allow for a simple, fast and economic way, the adaptation of rotating sensor devices of linear distance measurements of up to 10 meters for machines with slow movement, without any sharp acceleration and with an average number of maneuvers.

Technical Specifications	EM4	EM8	EM10
Reference	90.1404	90.1808	90.1810
Measurement Range, up to (mm)	4.000mm	8.000mm	10.000mm
Travel	200mm +/- 0.6/per turn	250mm +/- 0.6/per turn	300mm +/- 0.6/per turn
Cable		ø 0,61mm stainless steel	



Linear Measuring Magnetic System

- Magnetic detection without contact
- Easy assembly
- Metallic housing
- External or integrated reference signal

Type	MSL	MSM	MSH
Accuracy	± 40 µm	± 15 µm	± 10 µm
Polar Pitch	5+5	2+2	1+1
Resolution	up to 5 µm	up to 1 µm	up to 0,5 µm
Protection	IP67	IP67	IP67

